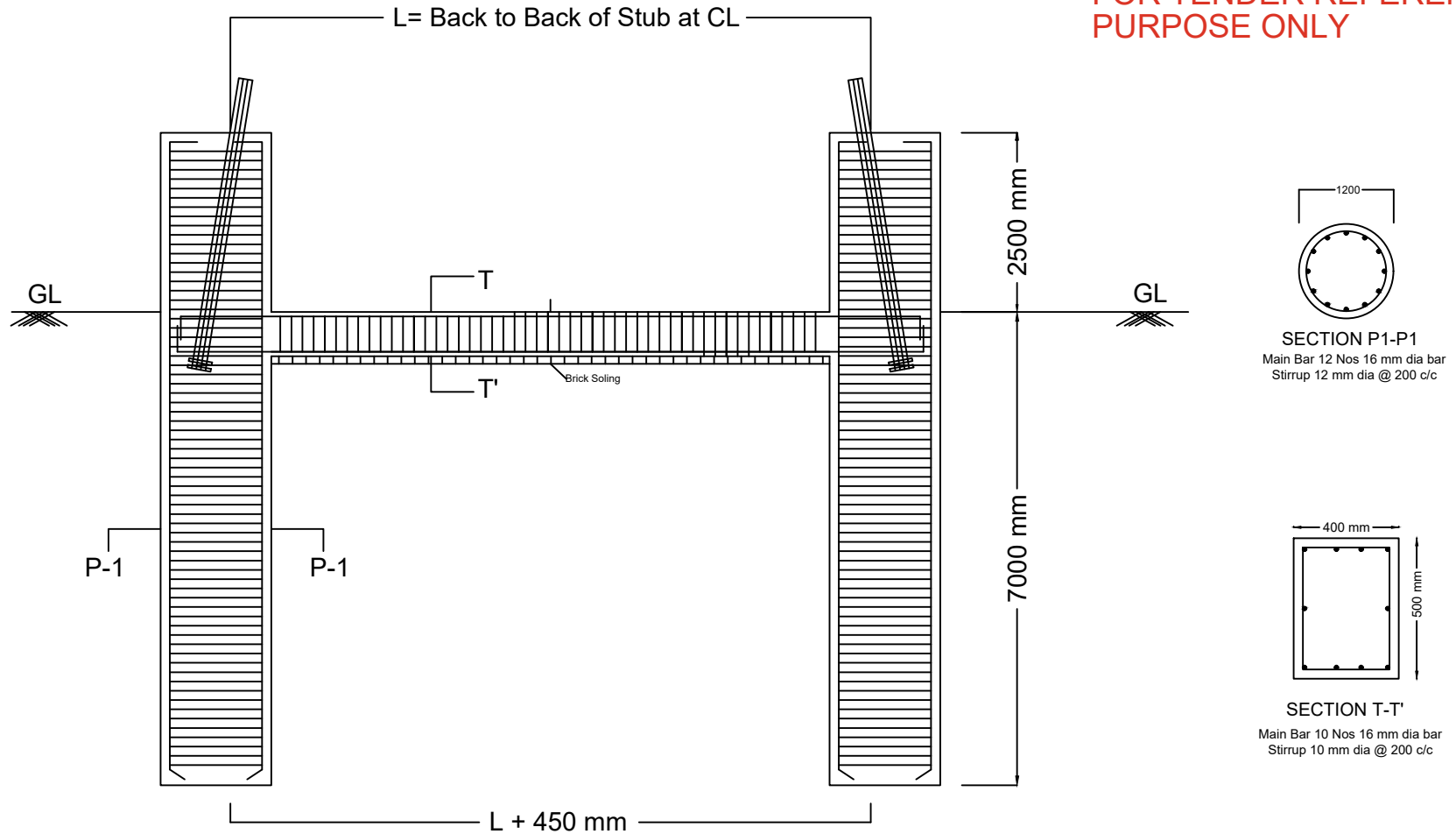
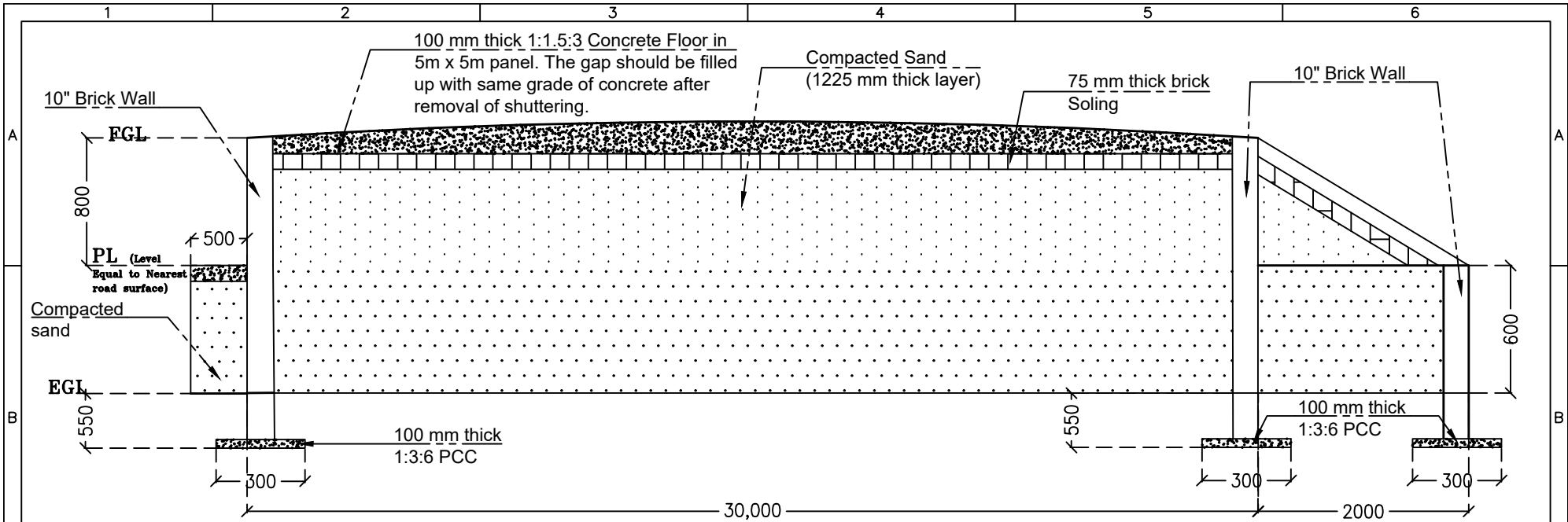


Typical Drawing of Construction of pile foundation at 132 kV D/C Mirza-Azara line for construction of Sualkuchi-Palashbari Bridge, AEGCL.

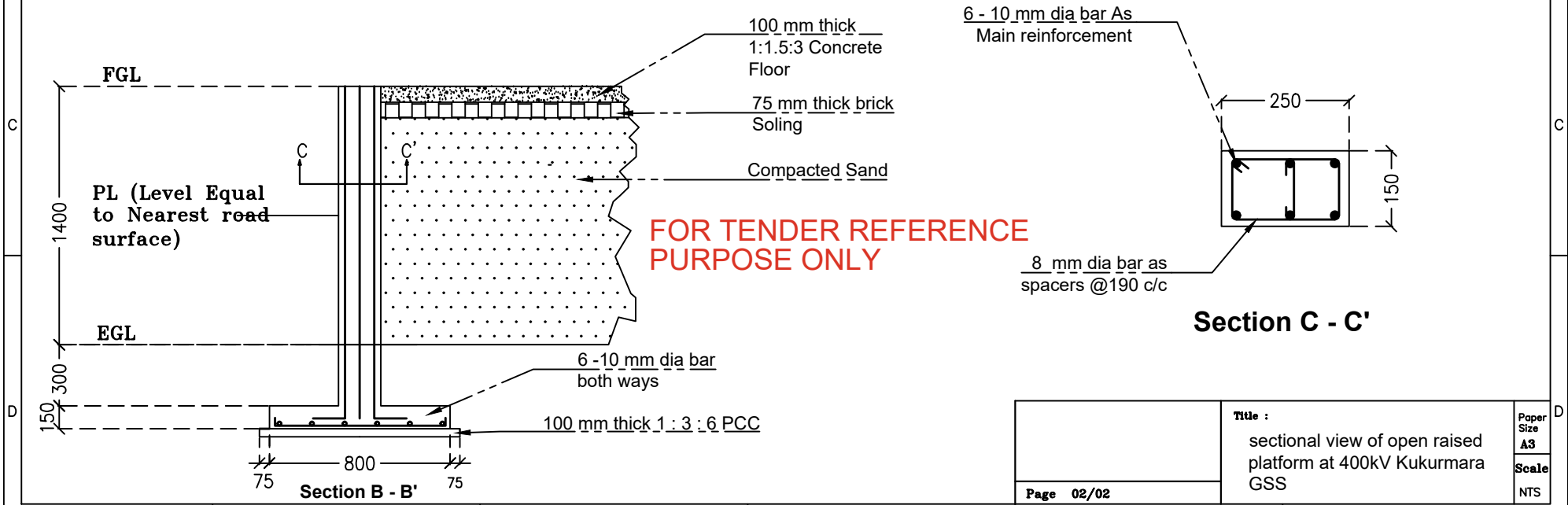
FOR TENDER REFERENCE PURPOSE ONLY



FOR LEG-LEG DISTANCE PLEASE REFER STUB SETTING TEMPLATE



Section A - A'



FOR TENDER REFERENCE PURPOSE ONLY

Section C - C'

<p>Page 02/02</p>	<p>Title : sectional view of open raised platform at 400kV Kukurmara GSS</p>	<p>Paper Size A3 Scale NTS</p>
-------------------	--	---

