

- PART LIST**
1. FIXED CONTACT ASSEMBLY
 2. MOVING CONTACT ASSEMBLY
 3. INSULATOR STACK (NOT IN OUR SCOPE OF SUPPLY)
 4. TANDEM PIPE (25 NB G.I PIPE)
 5. BASE CHANNEL (100 x 50 x 5 mm THICK CHANNEL)
 6. ROTATING STOOL BASE WITH LEVER ARM & CLAMP (M.S HOT DIP GALVANIZED)
 7. UNIVERSAL JOINT ARRANGEMENT
 8. DOWN OPERATING PIPE (50 NB G.I PIPE)
 9. OPERATING MECHANISM (MOTOR)
 10. SUPPORTING STRUCTURE (NOT IN OUR SCOPE OF SUPPLY)

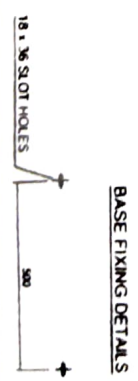
REFERENCE DRAWINGS:

FOR ISOLATOR CONTACT DETAILS _____ 4. RA 2472.03
 FOR OPERATING MECHANISM DETAILS (M.S.) _____ 4. M 2472.05
 FOR SCHEMATIC DIAGRAM DETAILS (M.S.) _____ 4. M 2472.06
 FOR AUXILIARY SWITCH DETAILS _____ 4.1.2472.08
 FOR NAME PLATED DETAILS _____ 4.2.2472.09

NOTES:

1. ALL DIMENSIONS ARE IN MILLIMETERS
2. ALL FERROUS PARTS ARE HOT DIP GALVANIZED
3. ALL NON FERROUS CONTACT POINTS ARE SILVER PLATED (10 TO 15 MICRONS)
4. THE INDICATED DIMENSIONS ARE SUBJECT TO THE MANUFACTURING TOLERANCE
5. UP TO 50 mm - ±1%, 51 TO 100 mm - ±2%, 101 TO 300 mm - ±1%, ABOVE 300 mm - ±0.5%
6. MAIN CREEPAGE DISTANCE 900 mm
7. APPLICABLE STANDARD IS IS 9821 PART 11 TO V

WEIGHT:	QTY	PACKAGE
NET WEIGHT OF THE ISOLATOR		57 NOS
EXCLUDING INSULATOR (225 Kg (Approx))		



Handwritten signature and initials

DIMENSIONS

A	B	C	D	E	F	G	H	I	J	K	M	N	O	P	Q	R	S	T	U	W
175	508	300	50	175	1327	140	1200	300	495	220	1500	NA	760	860	500	NA	3435	2702	NA	NA

CLIENT	ASSAM ELECTRICITY GRID CORPORATION LIMITED
CONTRACTOR	M/S. SARAIGHAT ELECTRIC, GUWAHATI.
CONTRACT NO	S/E/2016-17/06/5553 DATE: 11.06/2016
PROJECT	PNDY PROJECT - PACKAGE - A/PACKAGE - B/PACKAGE - C
DRG TITLE	17.5 kV, 1750 A TP DR. RT ISOLATOR WITH OUT EN. (LINE POINT HEIGHT 445 mm)
DRG NO	3. CR 2472 01
MANUFACTURER	GR POWER SWITCHGEAR LTD. JERDINETI, A HYDERABAD-500 055 INDI

Checked by

Deishyn

Checked by

John
26-7-16

APPROVED

Smita

Asstt. General Manager
O/o the G.M. (P&E)

By. General Manager
O/o the G.M. (P&E)

General Manager (P&E)

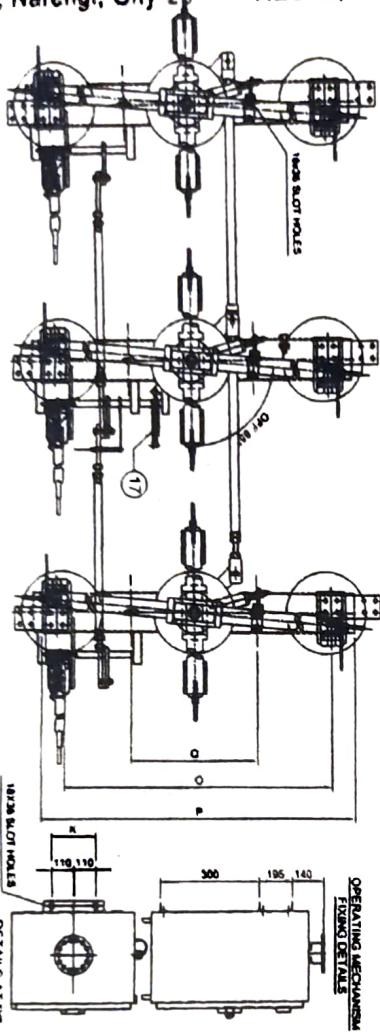
AEGCL, Narengi, Ghy-26

AEGCL, Narengi, Guwahati-26

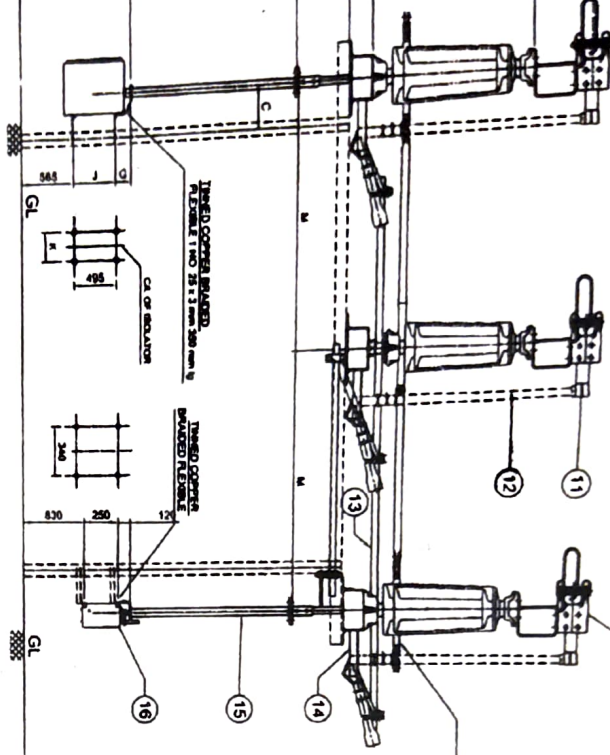
AEGCL, Narengi, Guwahati-26

DIMENSIONS																				
A	B	C	D	E	F	G	H	I	J	K	M	N	O	P	O	R	S	T	U	W
175	508	300	50	175	1327	140	1200	300	195	220	1500	NA	760	860	500	NA	3455	2702	175	1327

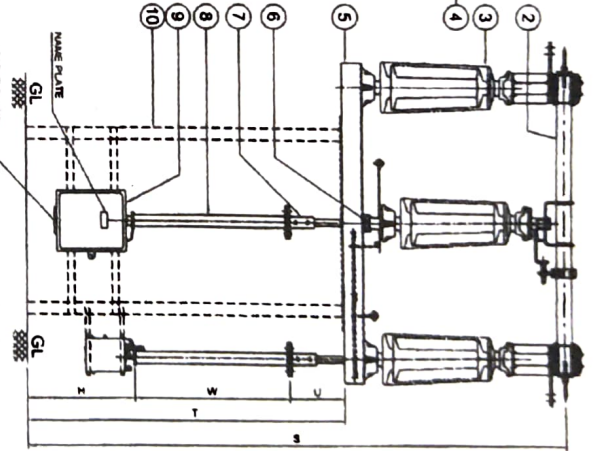
PLAN



ELEVATION



END VIEW



PART LIST

- FIXED CONTACT ASSEMBLY
- MOVING CONTACT ASSEMBLY
- INSULATOR STACK (NOT IN OUR SCOPE OF SUPPLY)
- TANDEM PIPE (25 NB, G.I PIPE)
- BASE CHANNEL (100 x 70 x 7.5 mm THICK CHANNEL)
- ROTATING STUCCO BASE WITH LEVER ARM & CLAMP
- UNIVERSAL JOINT ARRANGEMENT (IN 5 HOT DRP GALVANIZED)
- DOWN OPERATING PIPE (50 NB, G.I PIPE)
- OPERATING MECHANISM (NOT IN OUR SCOPE OF SUPPLY)
- SUPPORTING STRUCTURE (NOT IN OUR SCOPE OF SUPPLY)
- EARTH SWITCH FIXED CONTACT ASSEMBLY
- EARTH SWITCH MOVING CONTACT ASSEMBLY
- EARTH SWITCH TANDEM PIPE (25 NB, G.I PIPE)
- TOP OPERATING MECHANISM FOR EARTH SWITCH
- EARTH SWITCH DOWN OPERATING PIPE (40 NB, G.I PIPE)
- EARTH SWITCH OPERATING MECHANISM (MANUAL)
- MECHANICAL INTER LOCK BETWEEN MAIN SWITCH & EARTH SWITCH

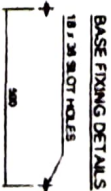
REFERENCE DRAWINGS

- FOR ISOLATOR CONTACT DETAILS
- FOR EARTH SWITCH CONTACT DETAILS
- FOR OPERATING MECHANISM DETAILS
- FOR ROTATING MECHANISM DETAILS
- FOR UNIVERSAL JOINT DETAILS
- FOR NAME PLATED DETAILS
- FOR MECHANICAL INTERLOCK DETAILS

NOTES

- ALL DIMENSIONS ARE IN MILLIMETERS
- ALL FERROUS PARTS ARE HOT DRP GALVANIZED
- ALL NON FERROUS CONTACT POINTS ARE SILVER PLATED (IN 10 TO 15 MICRONS)
- THE INDICATED DIMENSIONS ARE SUBJECT TO THE FOLLOWING TOLERANCES:
 - UP TO 50: ±0.10
 - 50 TO 100: ±0.15
 - 100 TO 200: ±0.20
 - 200 TO 300: ±0.30
 - 300 TO 500: ±0.40
 - 500 TO 1000: ±0.50
 - 1000 TO 2000: ±0.75
 - 2000 TO 5000: ±1.00
 - 5000 TO 10000: ±1.50
- SHORT TIME CURRENT RATING IS 25 KA FOR 1 SEC.
- MIN. CREEPAGE DISTANCE 800 MM
- APPLICABLE STANDARD IS IS: 8001 PART 1 TO 7

WEIGHT	QTY	PACKING
NET WEIGHT OF THE ISOLATOR EXCLUDING INSULATOR (400 kg Approx.)	25 NOS	25 NOS



File
Asst

CLIENT	ASSAM ELECTRICITY GRID CORPORATION LIMITED
CONTRACTOR	M/S. SARAIGHAT ELECTRIC, GUWAHATI.
CONTRACT NO	S/E/2016-17/06/5553 DATE: 11/06/2016
PROJECT	PSNE PROJECT - PACKAGE - A/PACKAGE - B/PACKAGE - C
DRG TITLE	33KV, 1250 A, TP DR. BT ISOLATOR WITH ONLETS
DRG NO	3. CR 2472 02
MANUFACTURE IN	GR POWER SWITCHGEAR LTD., JEDINETLA HYDERABAD-500 055 INDIA

ANNEXURE - III