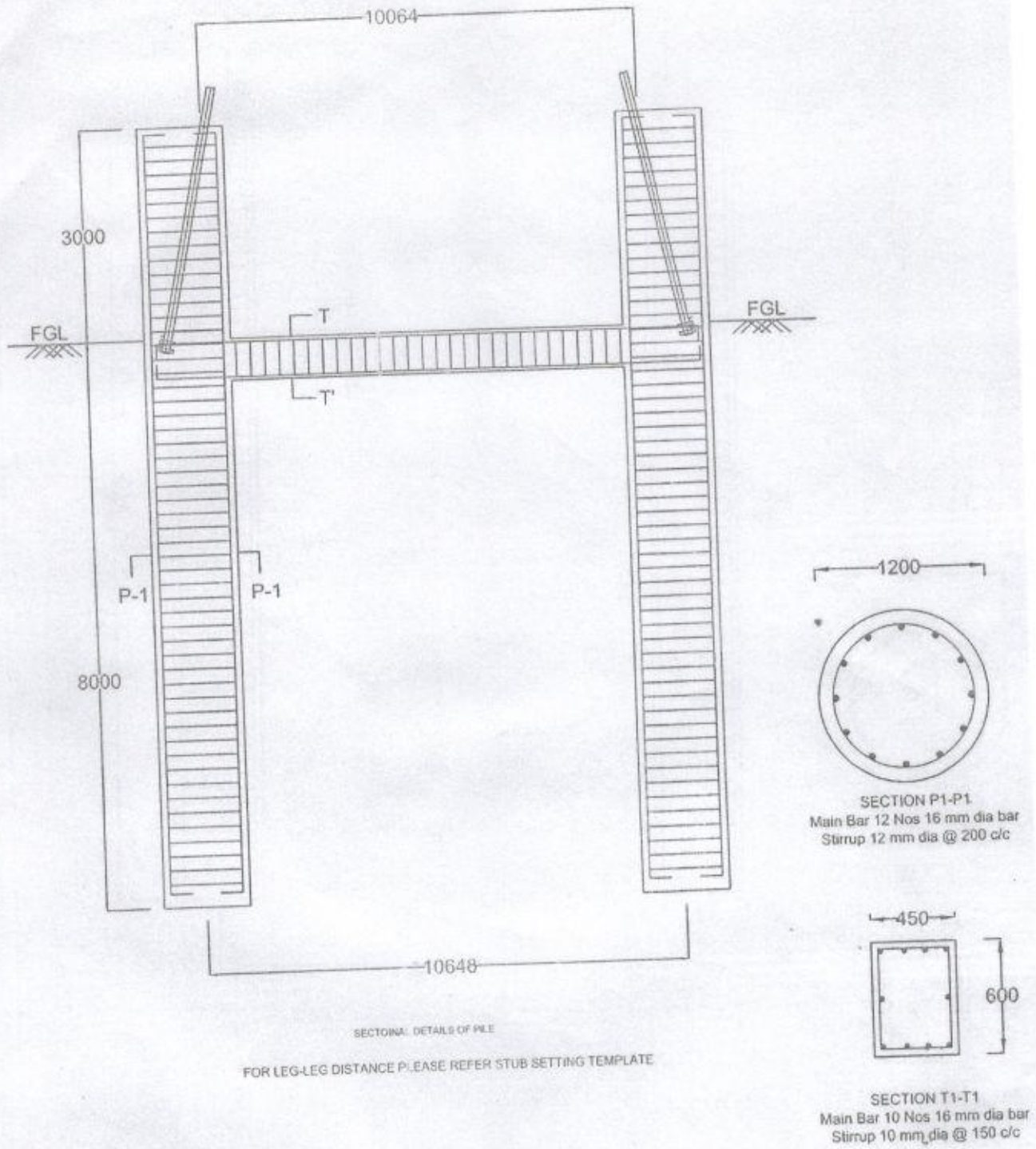


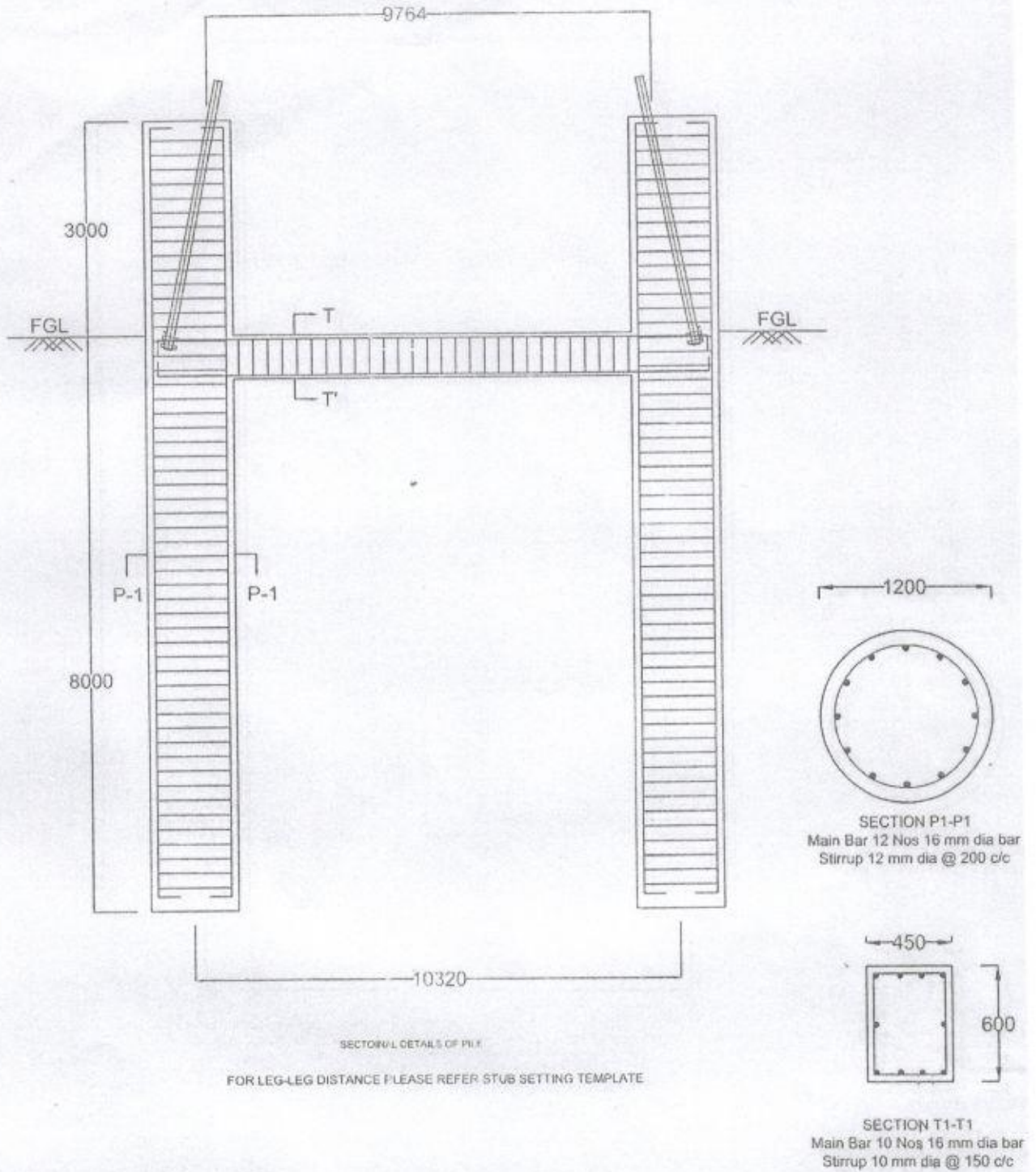
Drawing of Pile foundation for 220 kV DD+6 (3RC) tower of location no.358 (Kukumara-Sarusajai Line)



**FOR REFERENCE ONLY**

GRADE OF CONCRETE - M25  
GRADE OF STEEL - Fe500  
DRAWING FOR TENDER PURPOSES ONLY

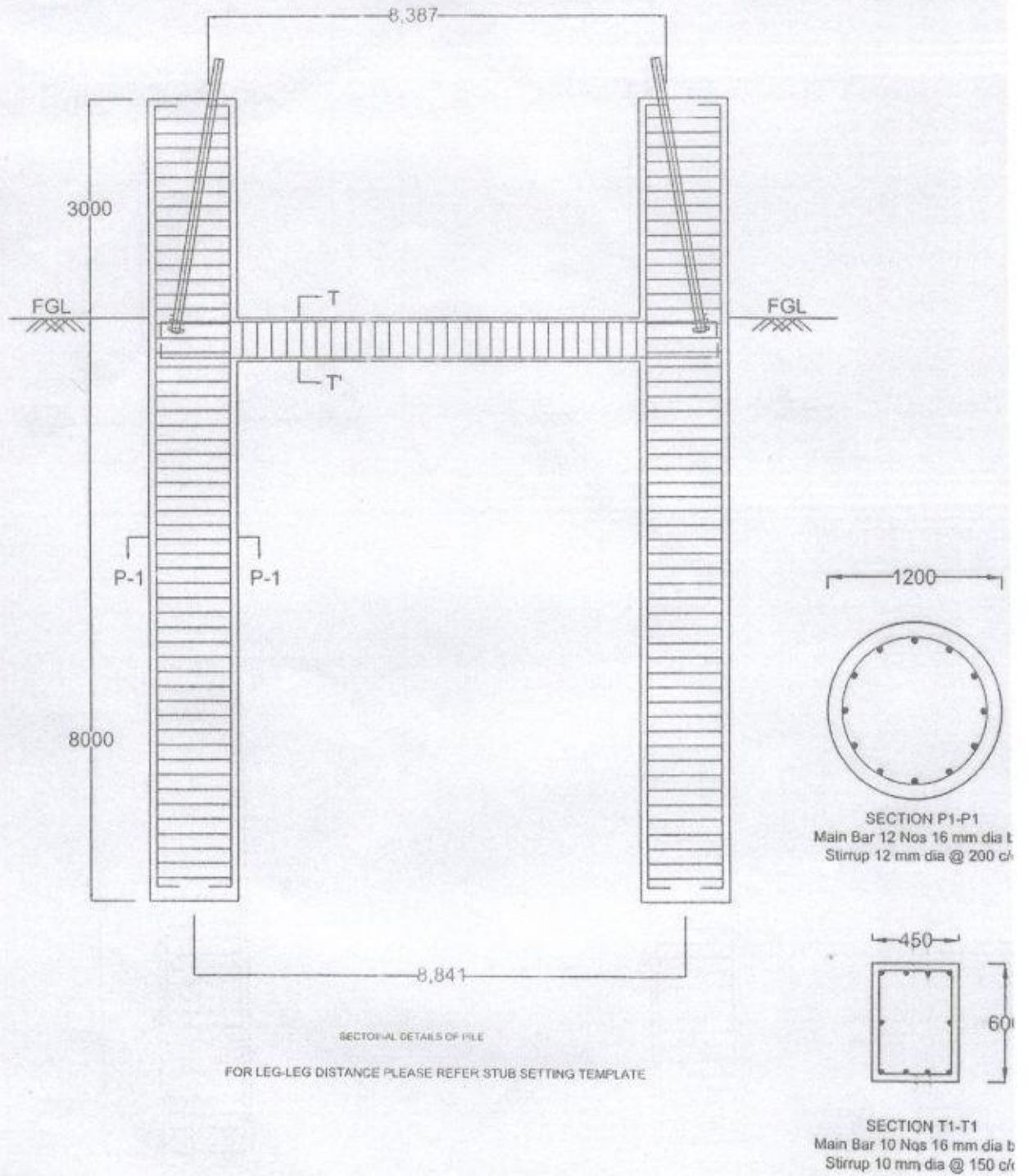
Drawing of Pile foundation for 220 kV DC+3 (3RC) tower of location no.359 (Kukumara-Sarusajai Line)



**FOR REFERENCE ONLY**

GRADE OF CONCRETE - M25  
GRADE OF STEEL - Fe500  
DRAWING FOR TENDER PURPOSE ONLY

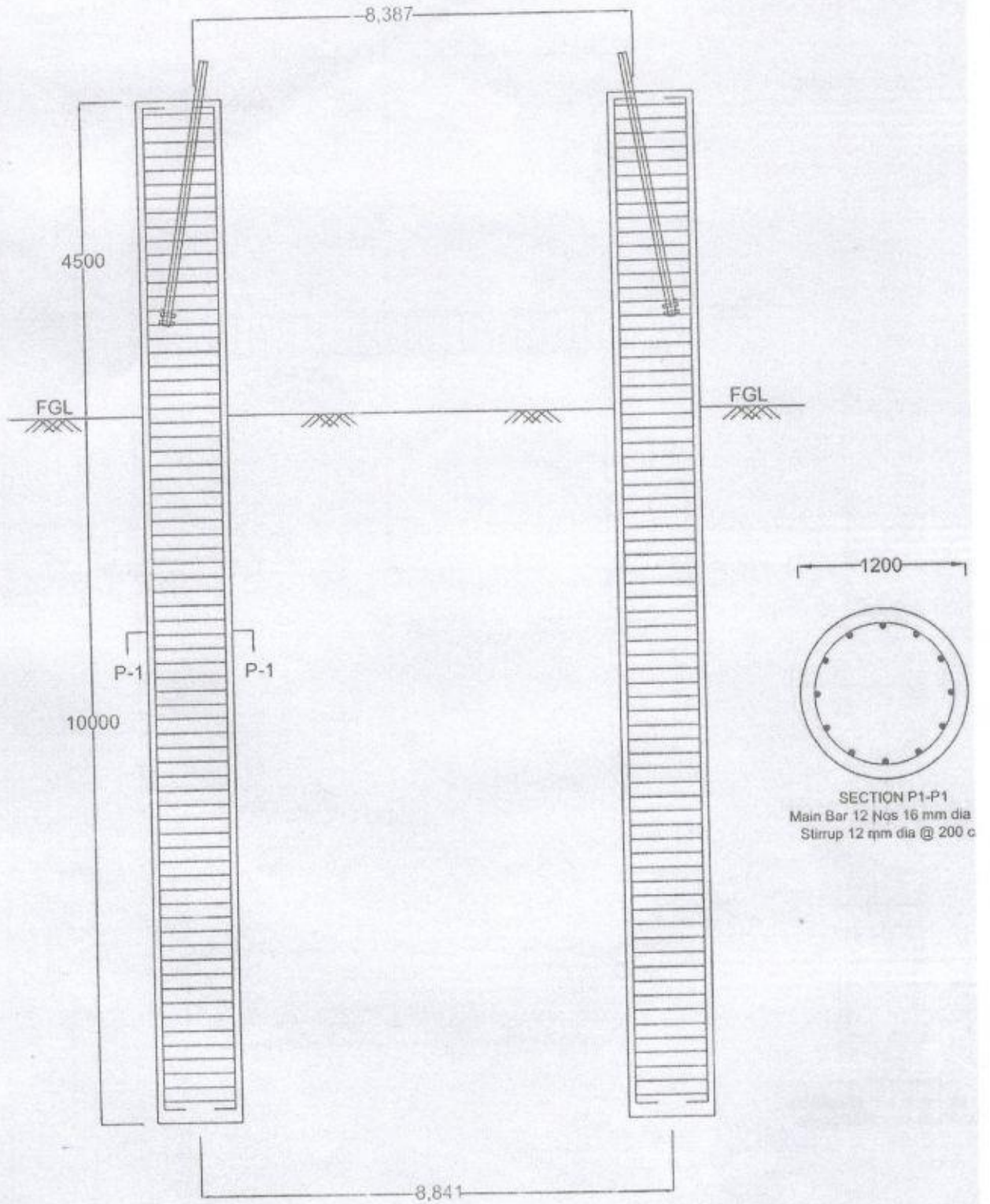
Drawing of Pile foundation for 220 kV DB+3 (3RC) tower of location no.366 (Kukumara-Sarusajai Line)



**FOR REFERENCE ONLY**

GRADE OF CONCRETE - M25  
GRADE OF STEEL - Fe500  
DRAWING FOR TENDER PROCESS ONLY

Drawing of Pile foundation for 220 kV DB+3 (4.5RC) tower of location no.367 (Kukumara-Sarusajai Line)



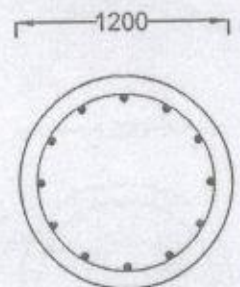
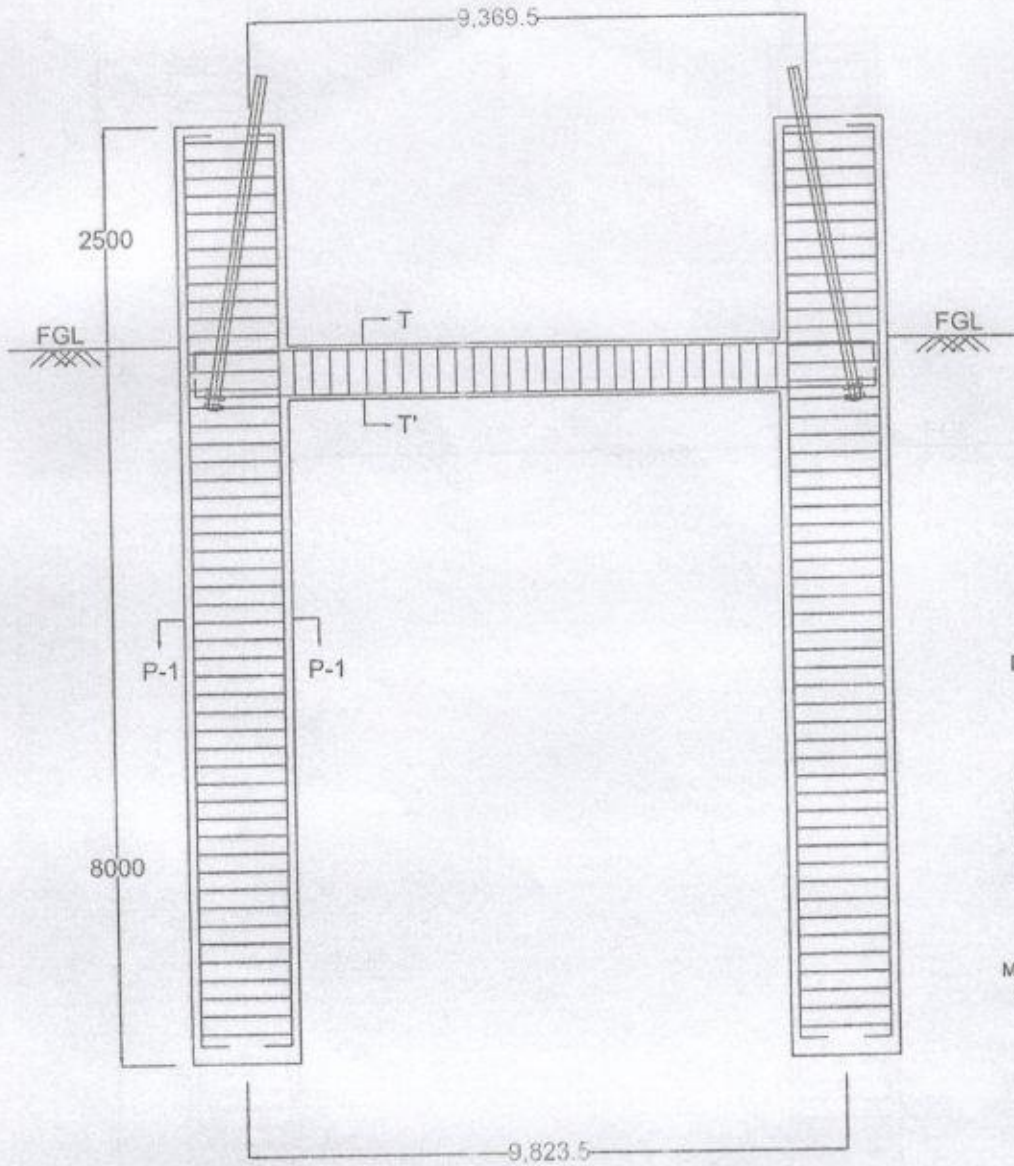
SECTIONAL DETAILS OF PILE

FOR LEG-LEG DISTANCE PLEASE REFER STUB SETTING TEMPLATE

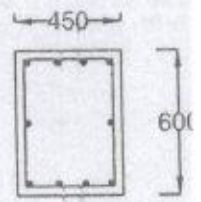
GRADE OF CONCRETE - M25  
GRADE OF STEEL - Fe500

**FOR REFERENCE ONLY**

Drawing of Pile foundation for 220 kV DB+6 (2.5RC) tower of location no.369 (Kukurmara-Sarusajai Line)



SECTION P1-P1  
Main Bar 12 Nos 16 mm dia b  
Stirrup 12 mm dia @ 200 c/c



SECTION T1-T1  
Main Bar 10 Nos 16 mm dia b  
Stirrup 10 mm dia @ 150 c/c

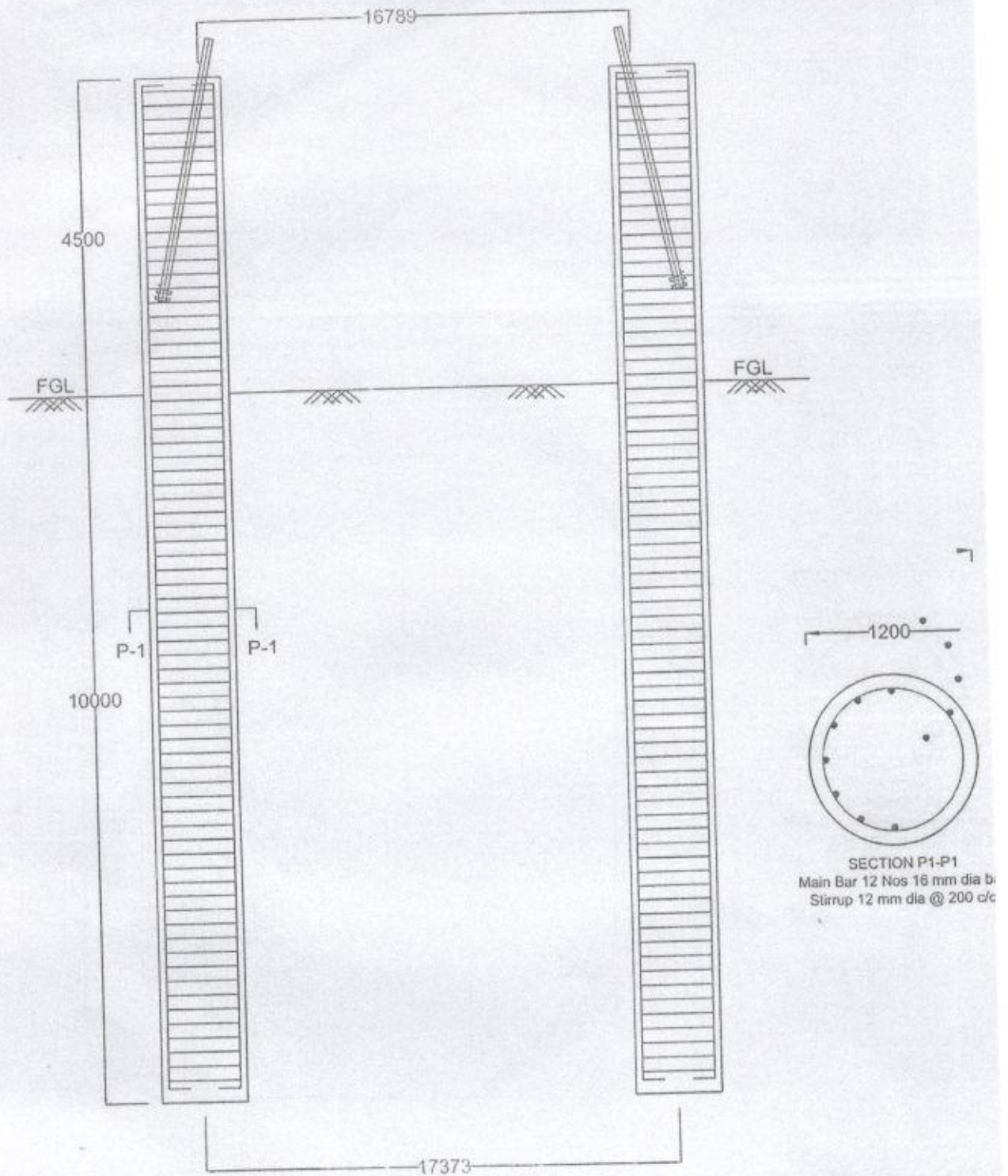
SECTIONAL DETAILS OF PILE

FOR LEG-LEG DISTANCE PLEASE REFER STUB SETTING TEMPLATE

**FOR REFERENCE ONLY**

GRADE OF CONCRETE - M25  
GRADE OF STEEL - Fe500  
DRAWING FOR TENDER PROCESS ONLY

Drawing of Pile foundation for 220 kV DD+18 (4.5RC) tower of location no.370 (Kukumara-Sarusajai Line)



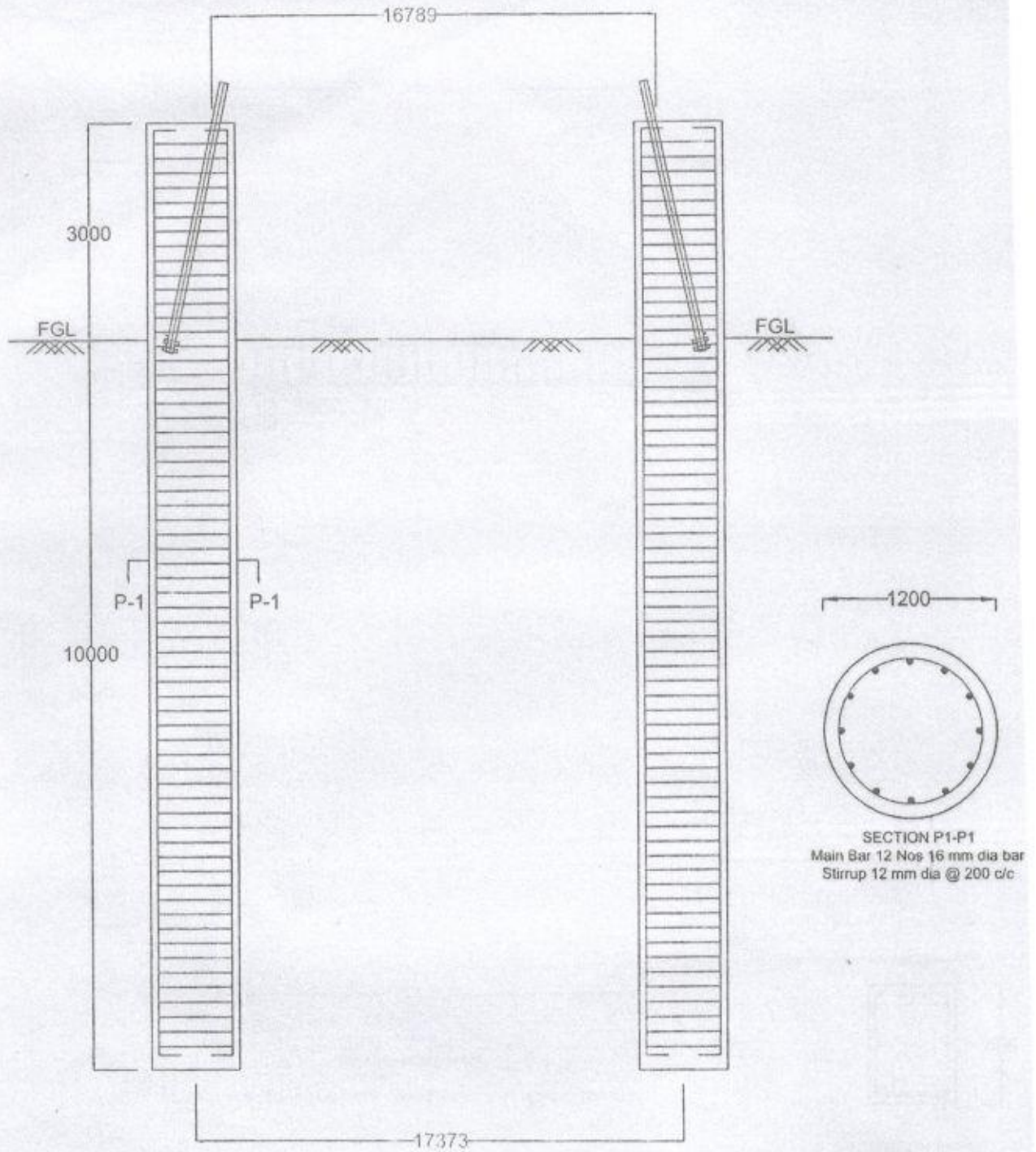
SECTIONAL DETAILS OF PILE

FOR LEG-LEG DISTANCE PLEASE REFER STUB SETTING TEMPLATE

**FOR REFERENCE ONLY**

GRADE OF CONCRETE - M25  
GRADE OF STEEL - Fe500

Drawing of Pile foundation for 220 kV DD+18 (3RC) tower of location no.370A (Kukurmara-Sarusajai Line)



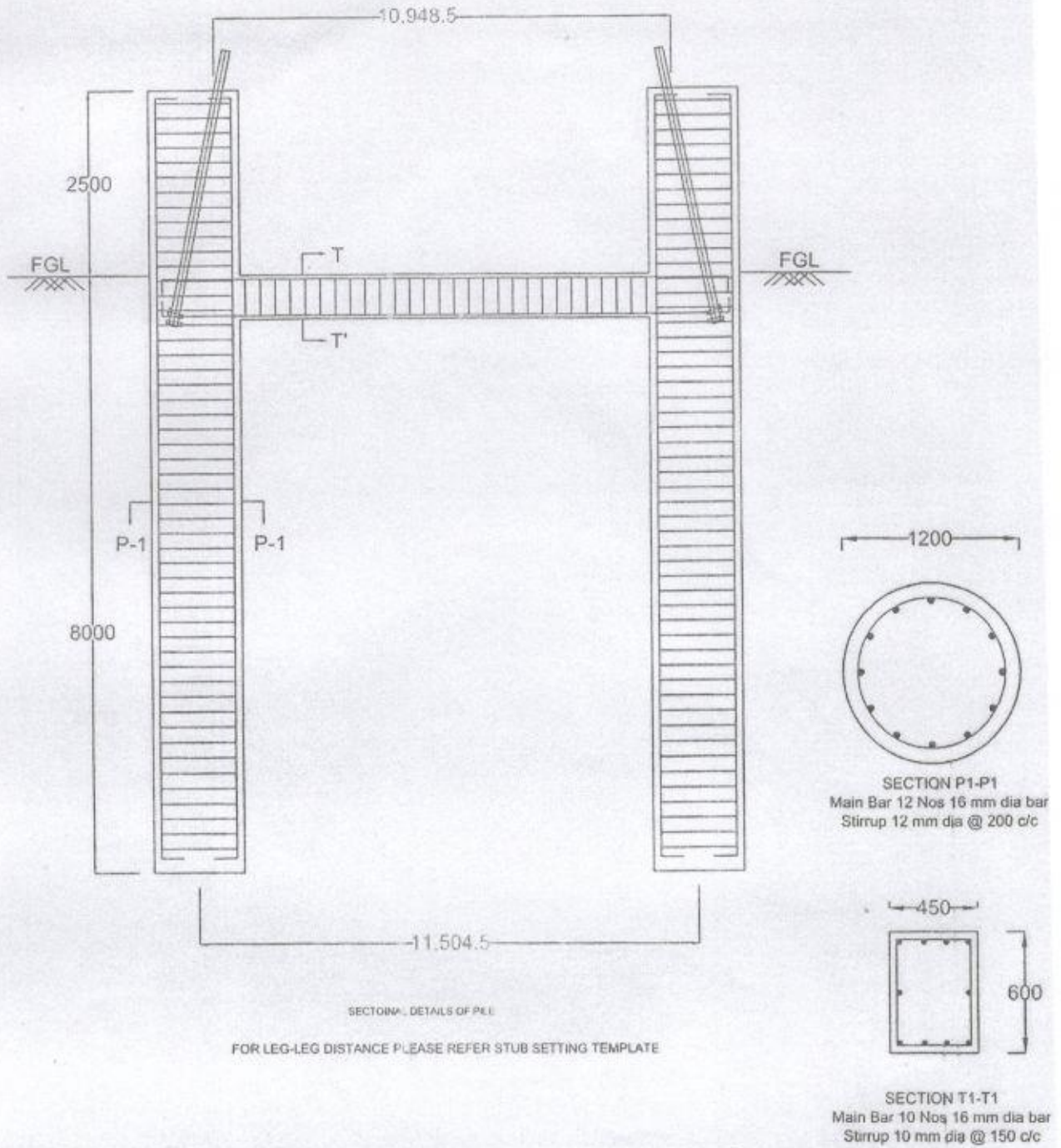
SECTIONAL DETAILS OF PILE

FOR LEG-LEG DISTANCE PLEASE REFER STUB SETTING TEMPLATE

**FOR REFERENCE ONLY**

GRADE OF CONCRETE - M25  
GRADE OF STEEL - Fe500

Drawing of Pile foundation for 220 kV DC+6 (2.5RC) tower of location no.371 (Kukurmara-Sarusajai Line)

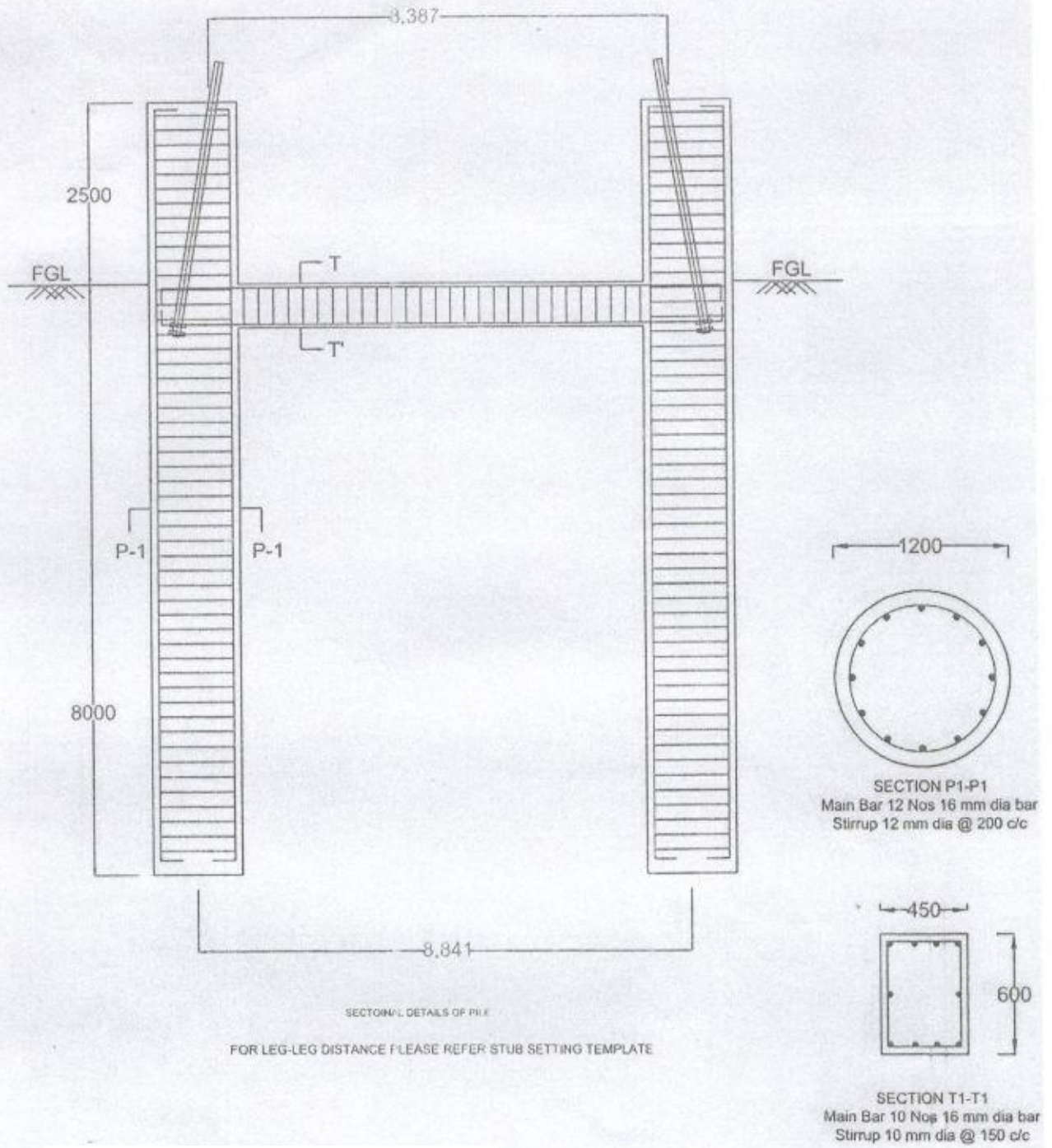


**FOR REFERENCE ONLY**

GRADE OF CONCRETE - M25  
GRADE OF STEEL - Fe500  
DRAWING FOR TENDER PROCESS ONLY



Drawing of Pile foundation for 220 kV DB+3 (2.5RC) tower of location no.372 (Kukurmara-Sarusajai Line)



**FOR REFERENCE ONLY**