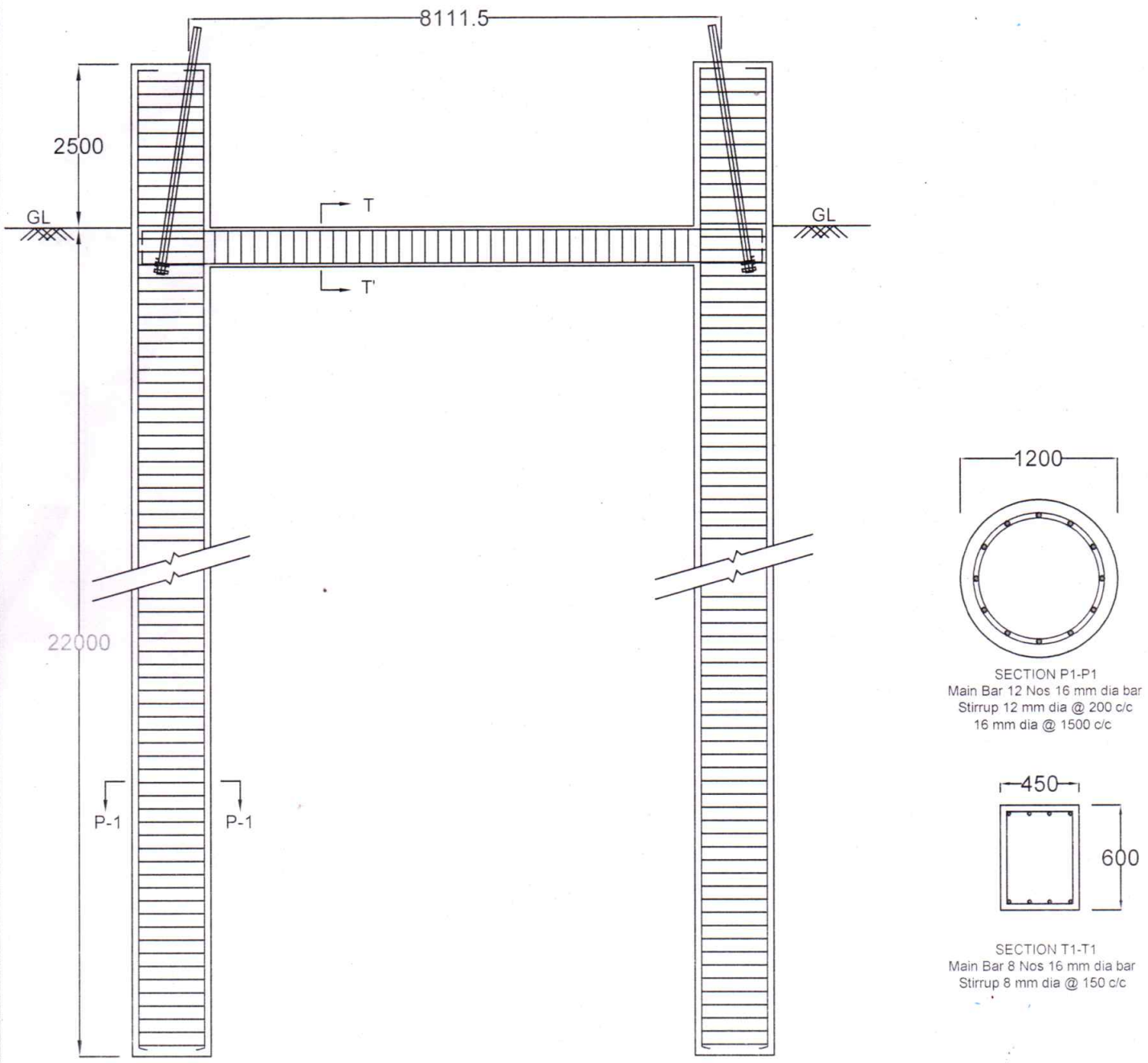


Drawing of Pile foundation for 132 kV DC+3 tower of loc. no.73 (North Lakhimpur-Dhemaji Line)



SECTIONAL DETAILS OF PILE

FOR LEG-LEG DISTANCE PLEASE REFER STUB SETTING TEMPLATE

GRADE OF CONCRETE - M25
 GRADE OF STEEL - Fe500
 STEEL LINER - 6 mm thick
 DRAWING NOT TO SCALE
 GROUND LEVEL WILL BE AS PER SITE CONDITION
 STUB SETTING WILL BE AS PER STUB SETTING TEMPLATE DRAWING

For Reference Purpose Only