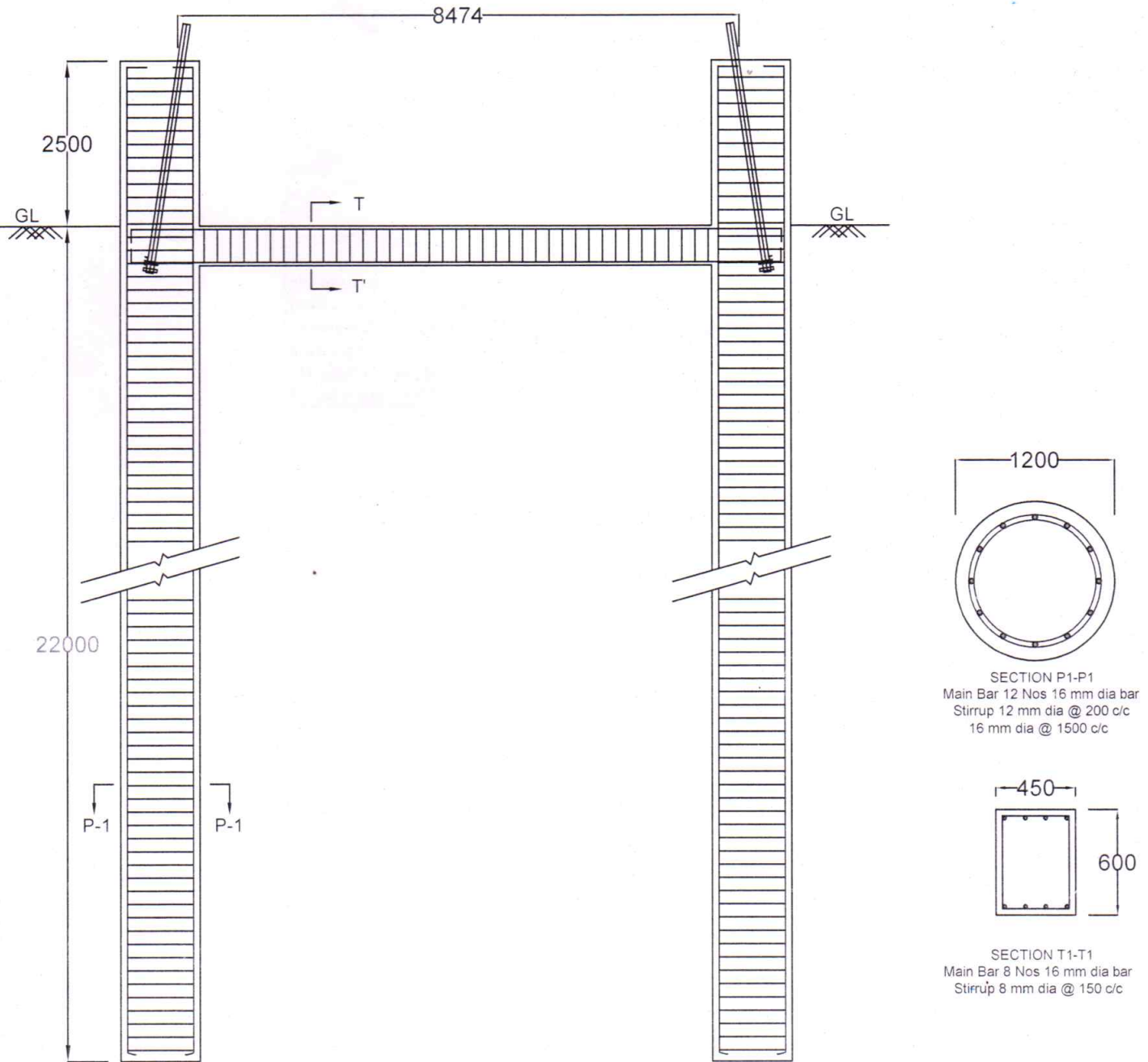


Drawing of Pile foundation for 132 kV DD+0 tower of loc. no.136 (Tinsukia-Dibrugarh Line)



SECTIONAL DETAILS OF PILE

FOR LEG-LEG DISTANCE PLEASE REFER STUB SETTING TEMPLATE

GRADE OF CONCRETE - M25  
 GRADE OF STEEL - Fe500  
 STEEL LINER - 6 mm thick  
 DRAWING NOT TO SCALE  
 GROUND LEVEL WILL BE AS PER SITE CONDITION  
 STUB SETTING WILL BE AS PER STUB SETTING TEMPLATE DRAWING

For Reference Purpose Only