

EROSION NEAR LOC NO. 28 OF 132KV D/C KOKRAJHAR-BIDAR

Coordinates of locations.

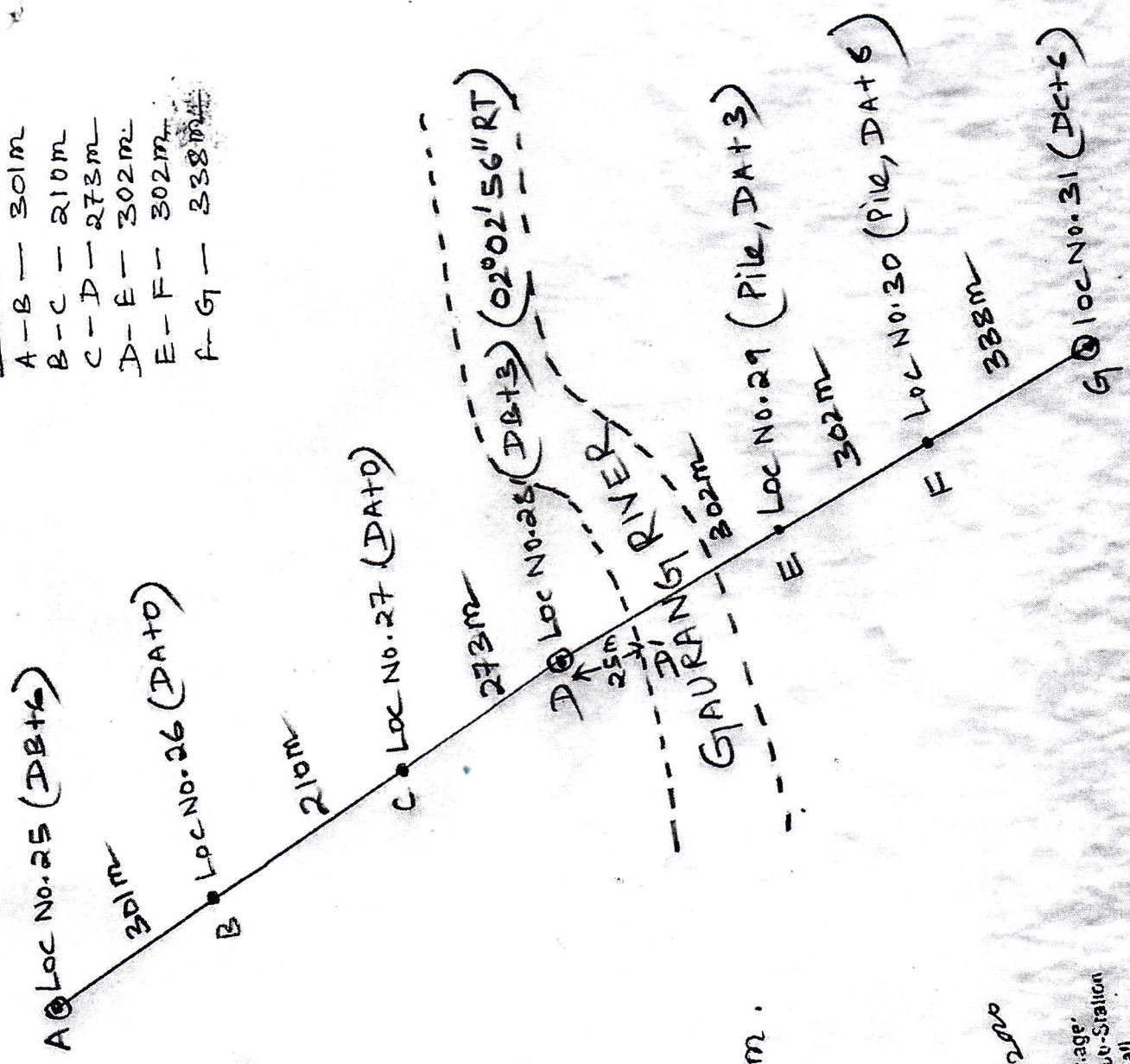
- A. 8° 44' N 90° 13' 14" E.
- B. 8° 47' N 90° 13' 25" E
- C. 8° 49' N 90° 13' 32" E
- D. 8° 52' N 90° 13' 41" E.
- E. 8° 55' 09" N 90° 13' 52.42" E
- F. 8° 57' 55" N 90° 14' 02.89" E
- G. 8° 00' 44" N 90° 14' 14.72" E.

width DD' = 101m

After Erosion, DD' = 25m.

SPAN

A-B	301m
B-C	210m
C-D	273m
D-E	302m
E-F	302m
F-G	338m



[Signature]
 23/12/2020
 Assn. General Manager
 220KV Salakati Grid Sub-Station
 AEGCL, Salakati

[Signature]
 3/12/2020
 Deputy Manager
 22kV Grid Sub-Station
 GCL, Salakati