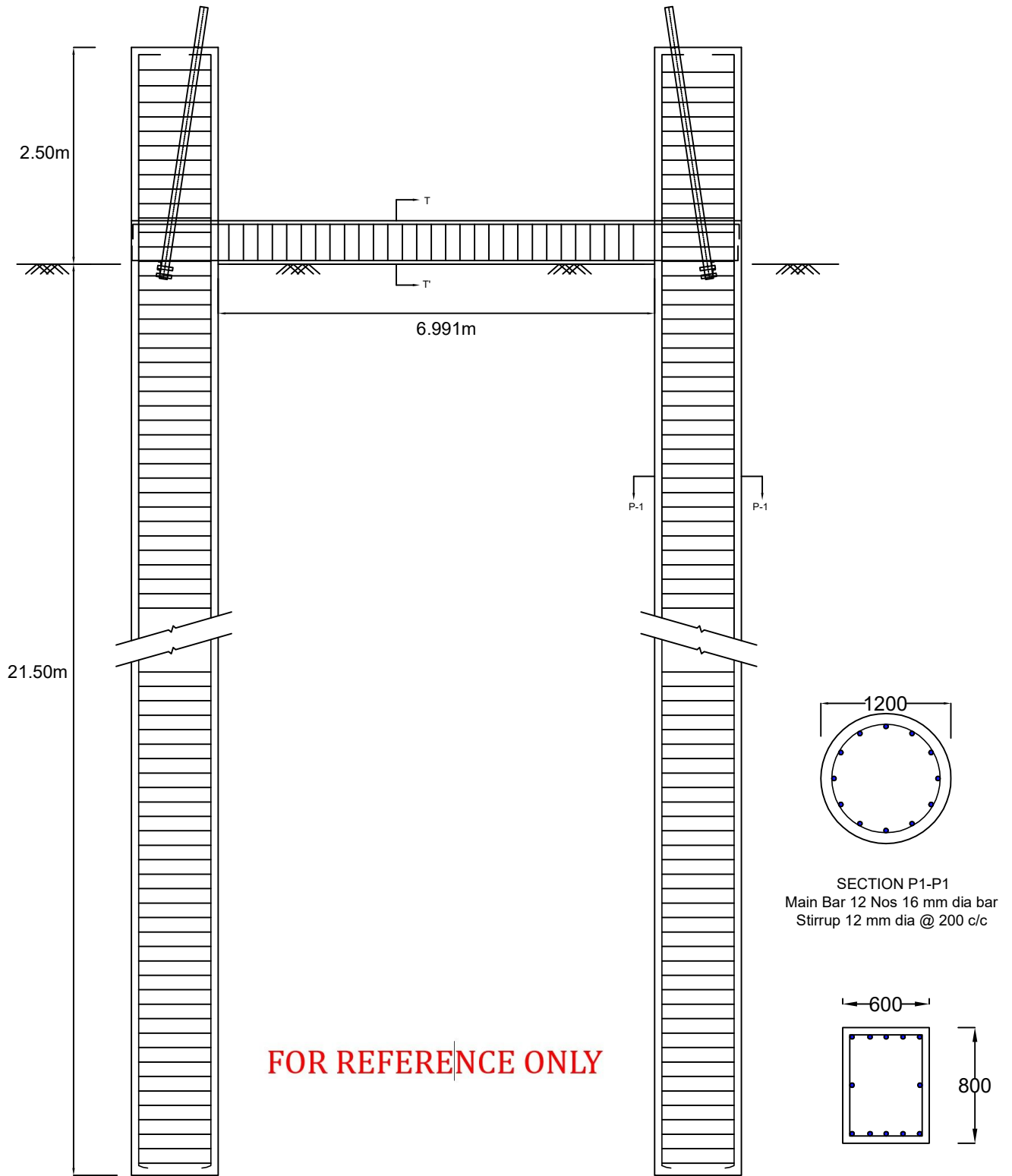


Drawing of Pile foundation for Loc. No.17 of 132 kV DB (+6) Bilasipara-Gauripur Line

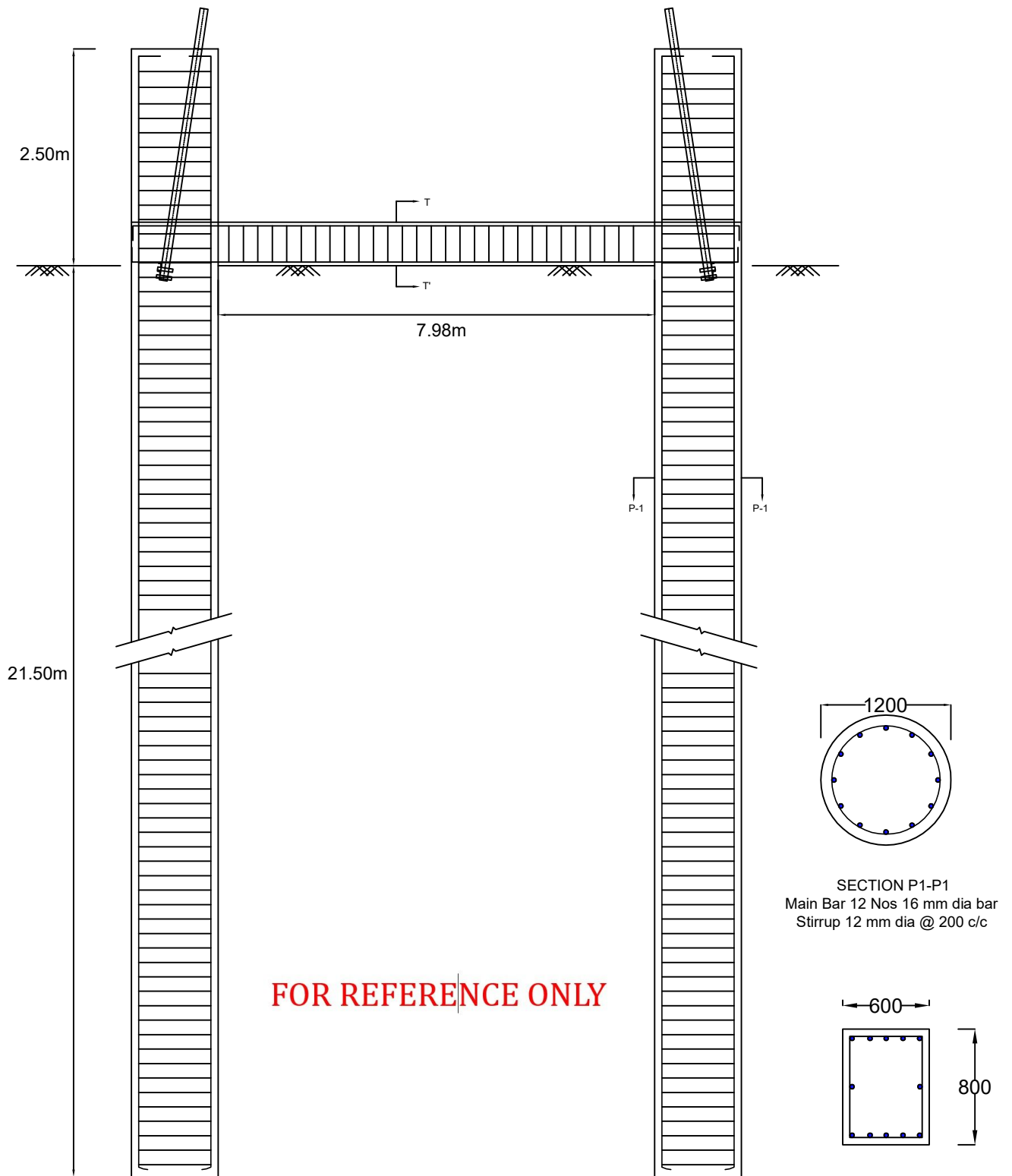


FOR REFERENCE ONLY

SECTIONAL DETAILS OF PILE

DRAWING NOT TO SCALE
GROUND LEVEL WILL BE AS PER SITE CONDITION
STUB SETTING WILL BE AS PER TOWER TYPE & DRAWING
GRADE OF CONCRETE - M25
GRADE OF STEEL - Fe500
STEEL LINER - 6 mm thick

Drawing of Pile foundation for Loc. No.18 of 132 kV DB (+9) Bilasipara-Gauripur Line

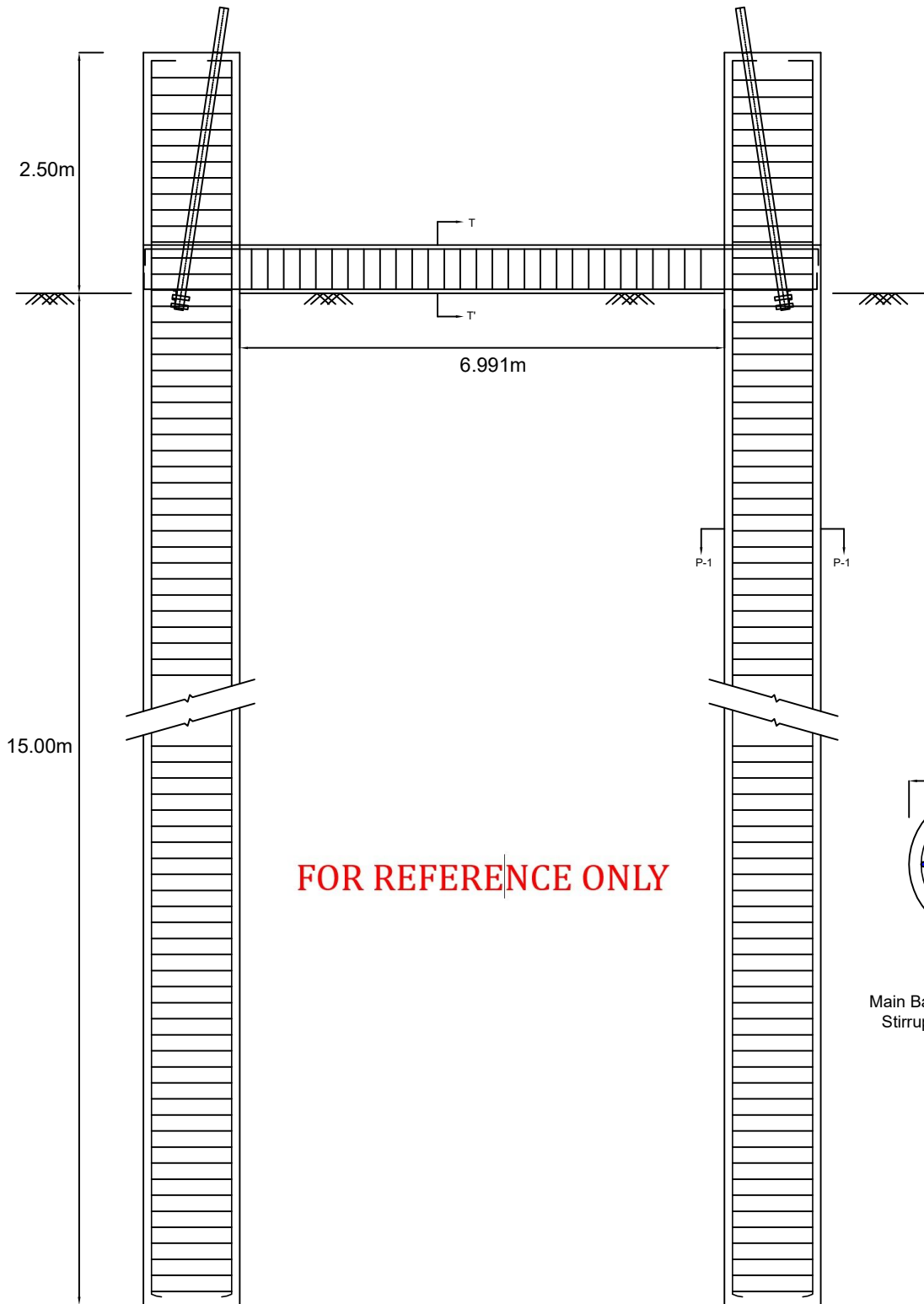


FOR REFERENCE ONLY

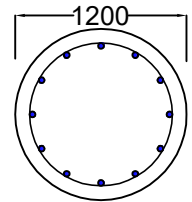
SECTOINAL DETAILS OF PILE

DRAWING NOT TO SCALE
GROUND LEVEL WILL BE AS PER SITE CONDITION
STUB SETTING WILL BE AS PER TOWER TYPE & DRAWING
GRADE OF CONCRETE - M25
GRADE OF STEEL - Fe500
STEEL LINER - 6 mm thick

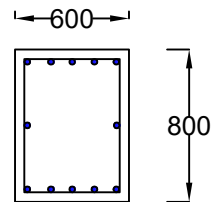
Drawing of Pile foundation for Loc. No.188 of 132 kV DB (+6) Gossaigaon-Gauripur Line



FOR REFERENCE ONLY



SECTION P1-P1
Main Bar 12 Nos 16 mm dia bar
Stirrup 12 mm dia @ 200 c/c



SECTION T-T'
Main Bar 12 Nos 16 mm dia bar
Stirrup 10 mm dia @ 150 c/c

SECTIONAL DETAILS OF PILE

DRAWING NOT TO SCALE
GROUND LEVEL WILL BE AS PER SITE CONDITION
STUB SETTING WILL BE AS PER TOWER TYPE & DRAWING
GRADE OF CONCRETE - M25
GRADE OF STEEL - Fe500
STEEL LINER - 6 mm thick