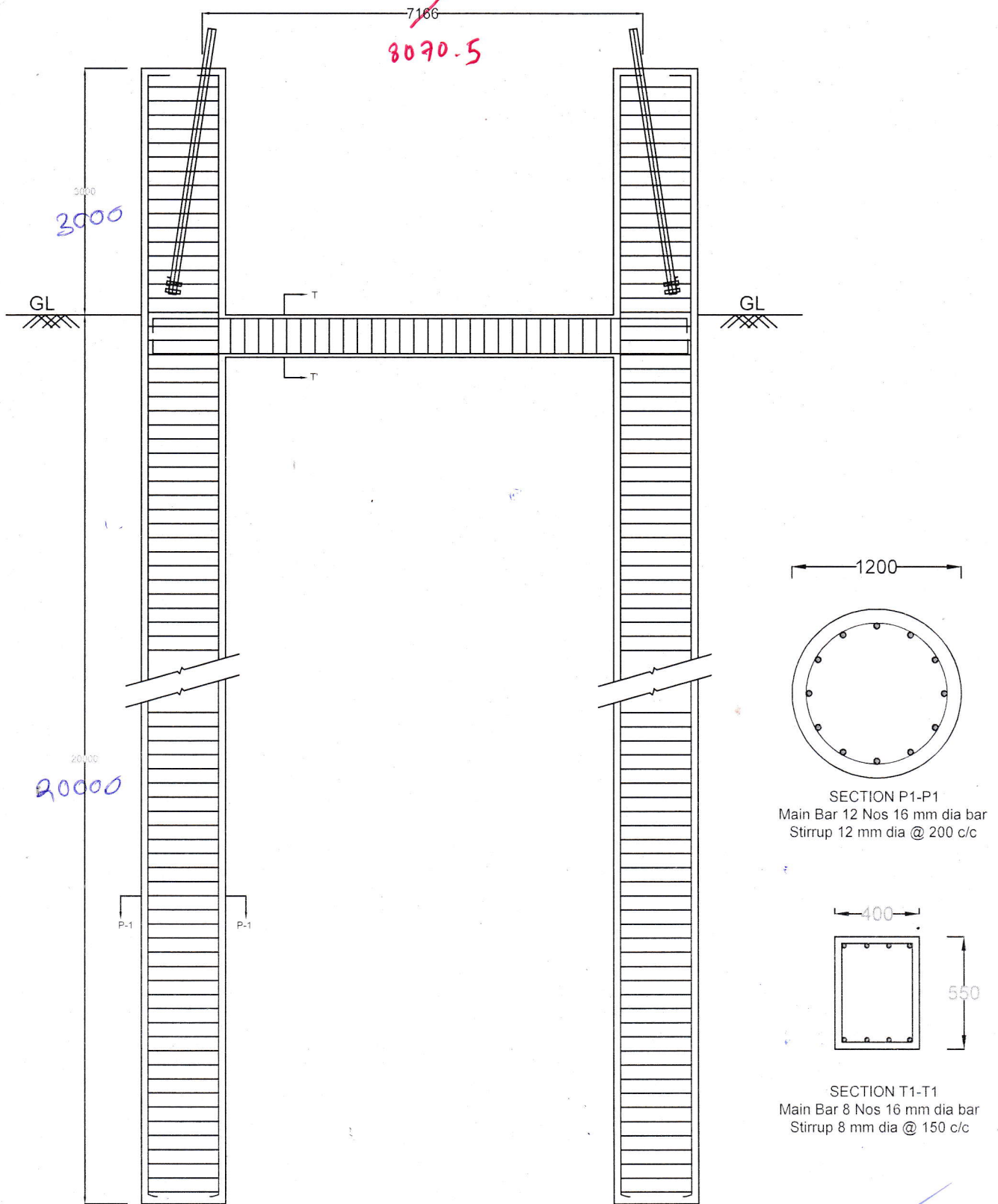


6
 Typical Drawing of Pile foundation for B+3 of 132 kV tower Depota-Dhekiajuli Line
 (Applicable for all type of tower at RIVER BANK)



FOR LEG-LEG DISTANCE PLEASE REFER STUB SETTING TEMPLATE

@
 Deputy General Manager (Civil)
 AEGCL, Bijulee Bhawan
 Paltanbazar, Guwahati-1

GRADE OF CONCRETE - M25
 GRADE OF STEEL - Fe500
 STEEL LINER - 6 mm thick
 DRAWING NOT TO SCALE
 GROUND LEVEL WILL BE AS PER SITE CONDITION
 STUB SETTING WILL BE AS PER STUB SETTING TEMPLATE DRAWING